



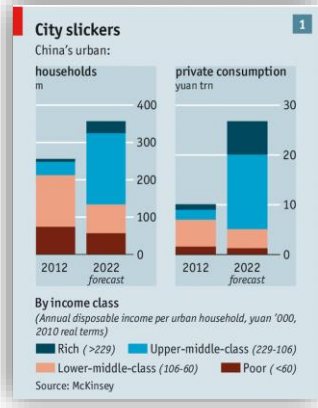
Office for
National Statistics

IDEAS - Integrated Data Enabling Analysis and Statistics

GSS Conference, 22 November 2017

Becky Tinsley

IDEAS Context



Produce coherent and reliable statistical information within less time and using less resources

Faster response to requests for critical information



**Better Statistics,
Better Decisions**

Strategy for UK statistics,
2015 to 2020

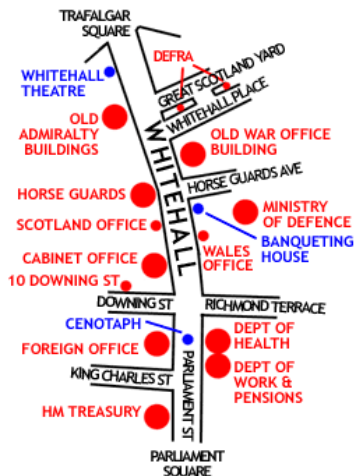
Ambitious strategy for UK Statistics

IDEAS Context



Digital Economy Act 2017 – A legislative framework for data access to produce statistical information

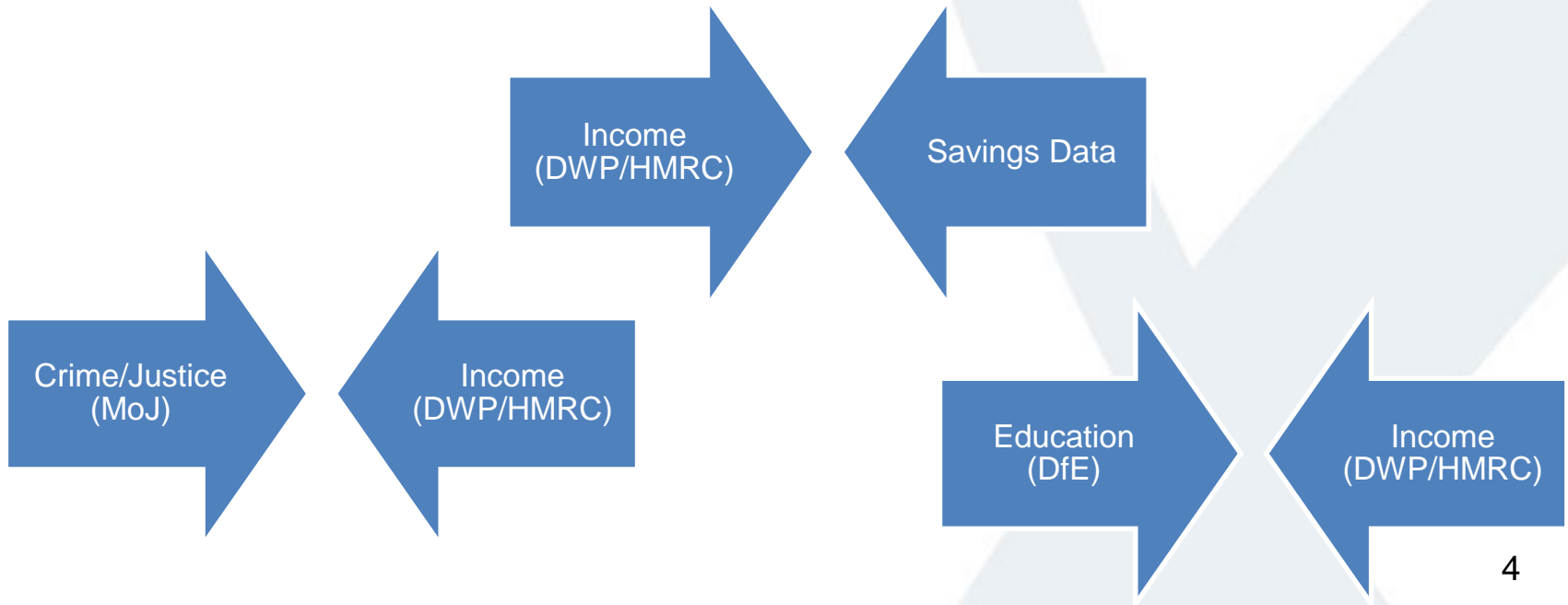
World class digital infrastructure



Joined up Whitehall collaboration on shared interests (common measurement of households, income)

Data Linkage

- Joining records from two sources containing different information for the same entity
- Linkage work already carried out across government and providing insight:



Systematising Linkage – Data Integration

What do we mean by data integration?

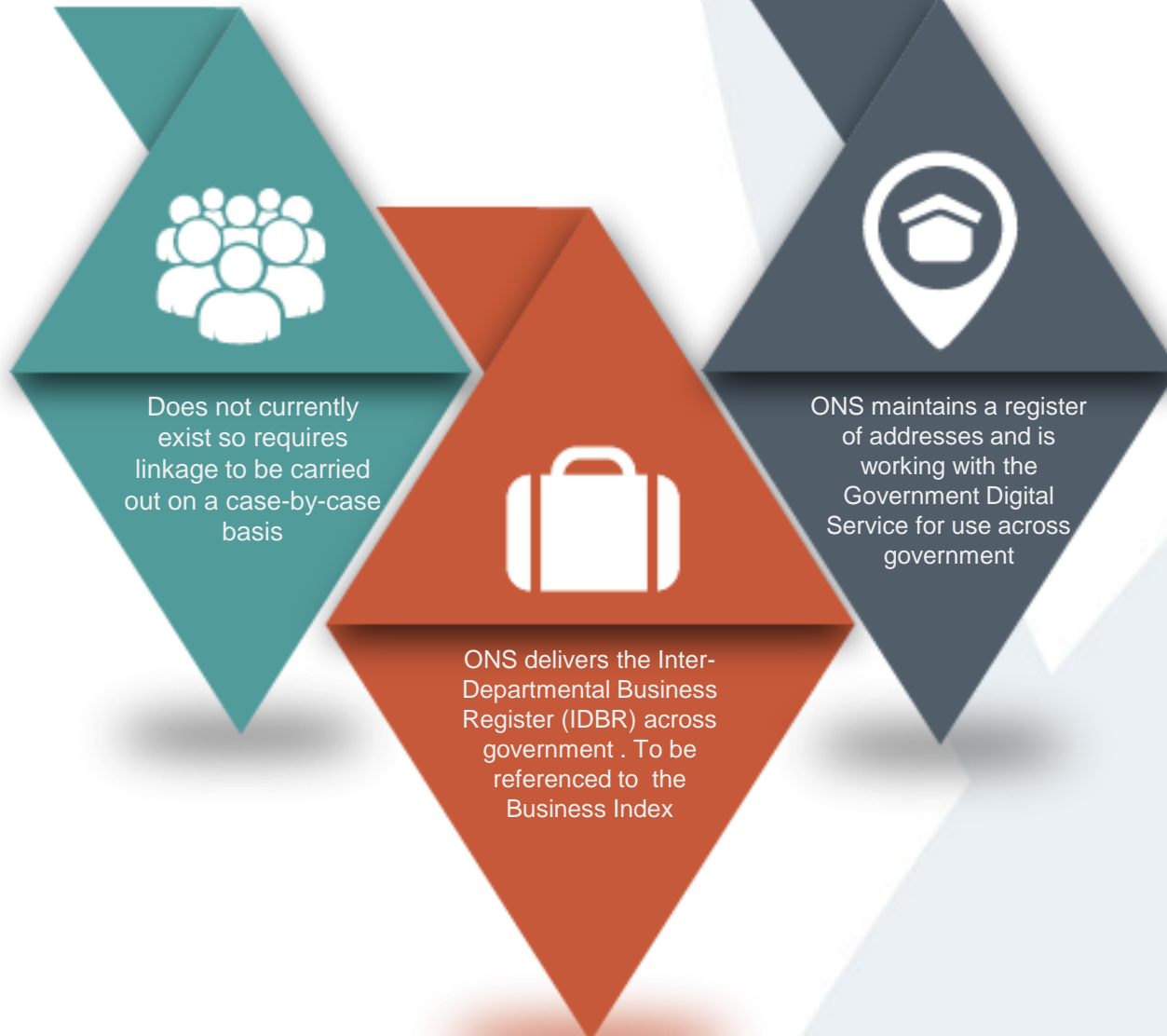
Holding de-identified datasets in such a way that can be consistently and coherently joined together...

...for a range of different applications

...in a far more timely way than the existing data model...

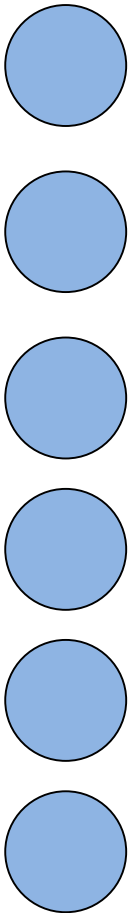
...without being a large dataset of everything

Data Integration – 3 way index

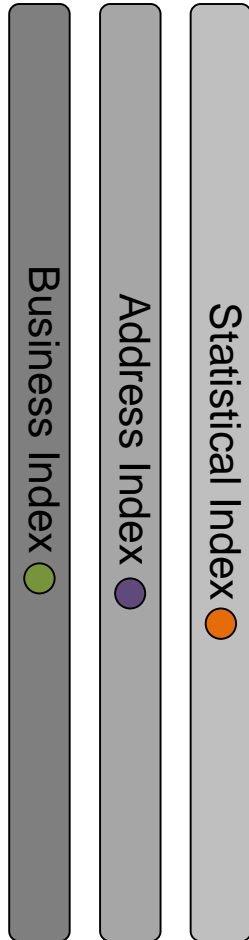


IDEAS - A New Data Model

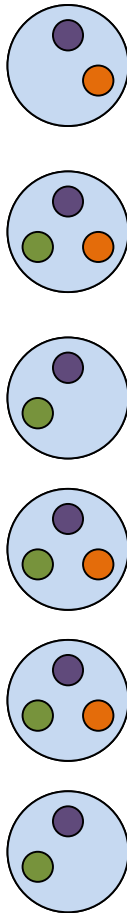
Data sources
(admin, big,
survey,
commercial)



Link Sources to
Indices Add
Common ID



De-identified
Data Sources,
with
Common ID



Datasets
Joined on
Common ID



Output
Functions

Statistics & Statistical
Research

Statistical
Releases

Ad Hoc
Outputs

Statistical Services to
Third Parties

Inform Policy

Third Party
Disclosure

Accredited
Research
Output

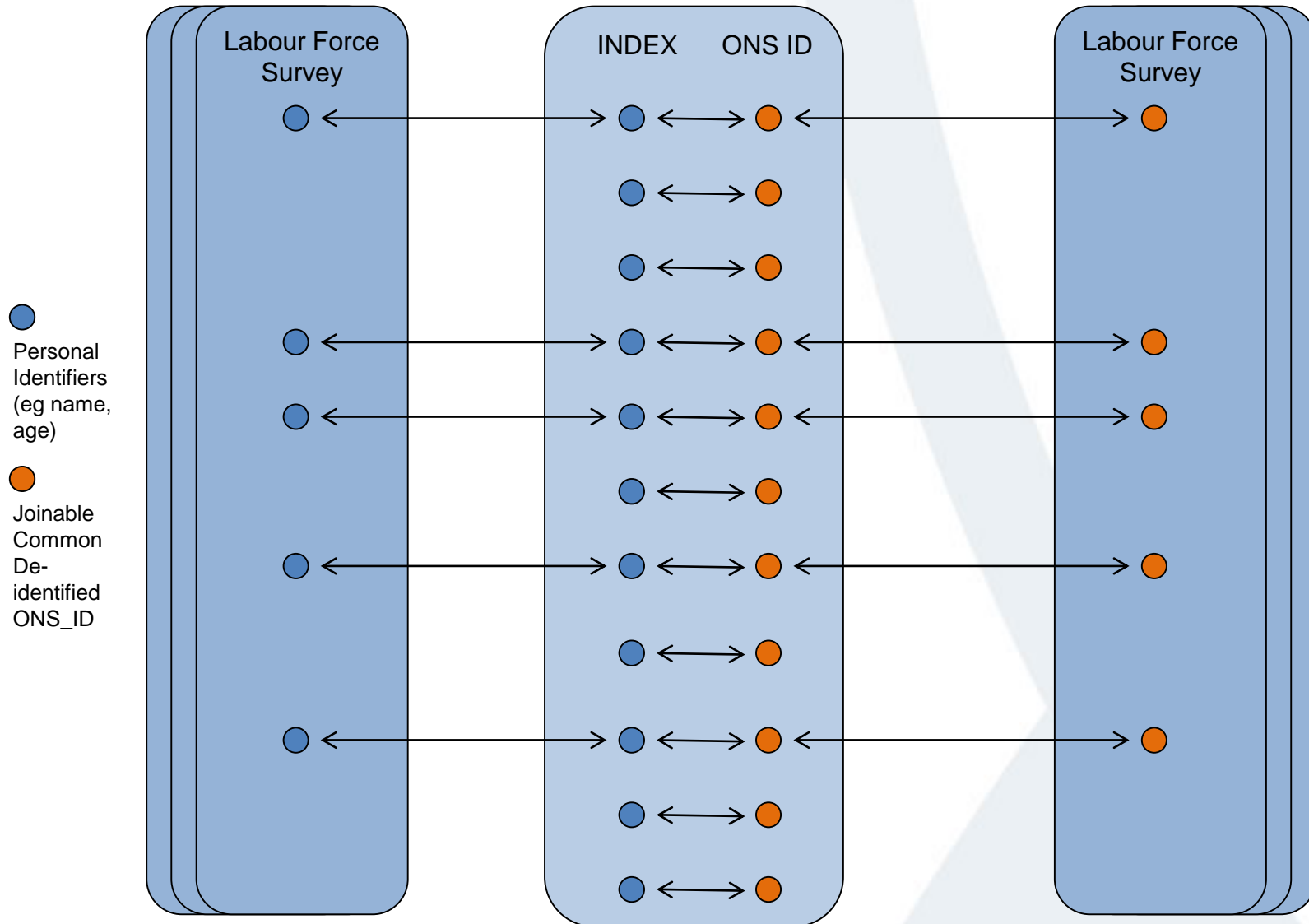
Devolved
Statistics

ONS

GSS

ACADEMIA / DEVOLVED

Creating and Using an Index



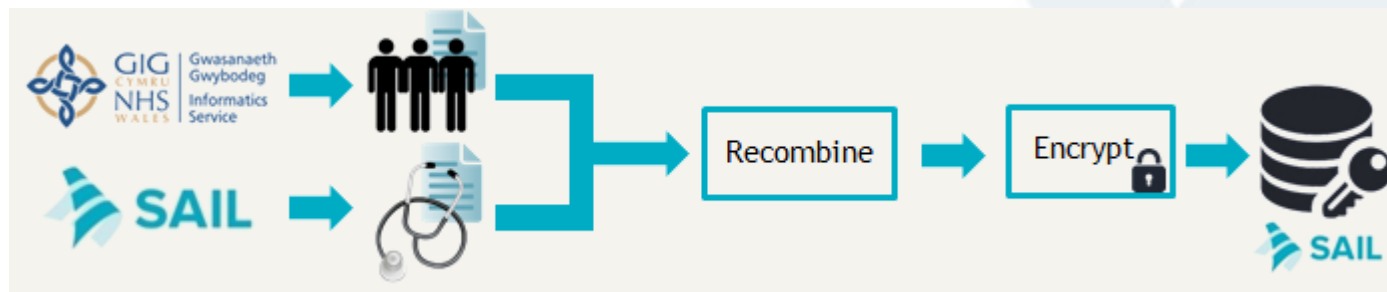
Using IDEAS - Principles

- Only a data model
 - Any application would need to be both legal and ethical
- De-identified at point of use
 - Researchers only ever work with de-identified data
- Separation of duties
 - Maintenance of and linking to index is separated from any working with characteristic information
- Separation of storage
 - No characteristic information stored with index

Similar models



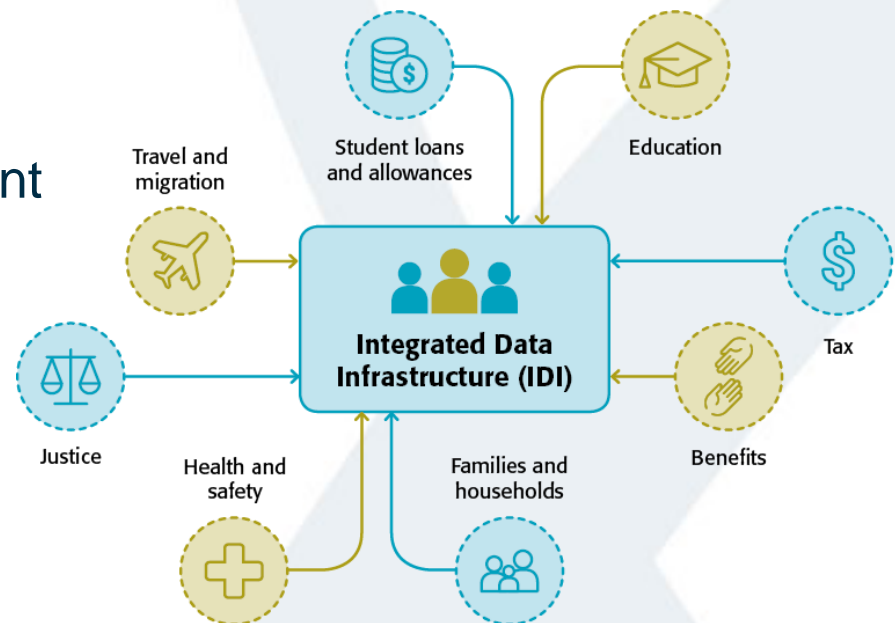
- Established in 2006
- A system which links de-identified data at individual and household level across many health and health related datasets in Wales.
- Offers a secure environment and training to link datasets to answer health related questions
- A research ethics committee retains the ethical oversight of the process and a member of the National Research Ethics Service sits at an independent review panel.



<https://www.ncbi.nlm.nih.gov/pmc/articles/PMC4139270/>

Similar models

- Established in 2011
- The IDI is a large SQL database holding linked longitudinal microdata about people and households.
- Index creating by linking information about the same identity across multiple data sources in different ways to produce statistics for the public good.
- Operate within the 5-safes framework
- Continuous public engagement leading to informed trust
- Health projects require ethics approval
- Training provided

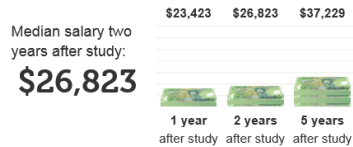


How the IDI is being used in NZ

Compare Study Options

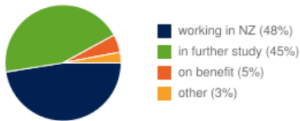
Bachelors with Bachelors
 in Performing Arts in Pharmacy **Compare**

Bachelors: Performing Arts



60% Employment rate two years after study

Status one year after study

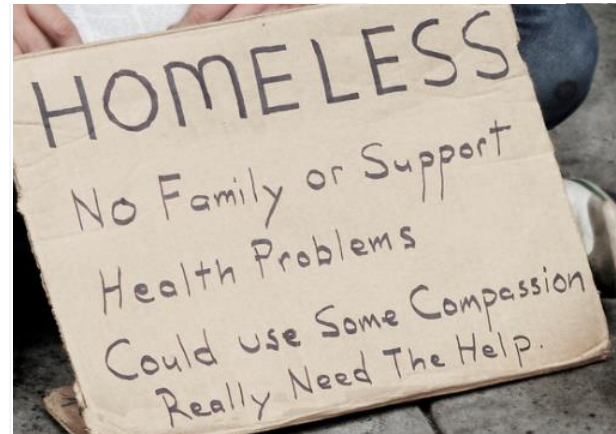
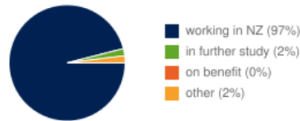


Bachelors: Pharmacy



88% Employment rate two years after study

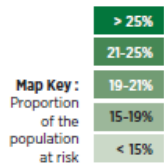
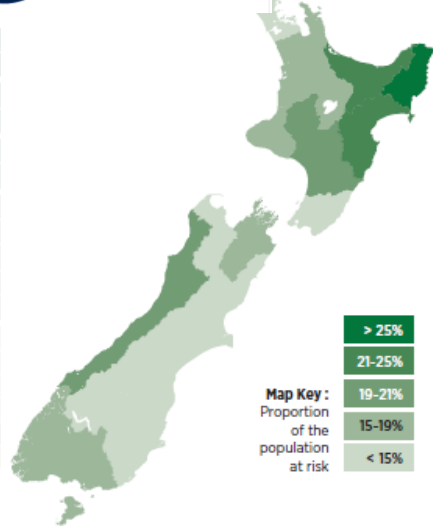
Status one year after study



15% MOST AT RISK BY REGION

We know where these young people are:

Regional Council	number	% of pop.
Gisborne/East Coast	1,944	28.7%
Northland	5,577	27.5%
Hawke's Bay	4,533	22.1%
Bay of Plenty	7,941	21.6%
Manawatu-Wanganui	6,363	20.1%
West Coast	732	19.3%
Waikato	10,107	18.6%
Southland	2,274	18.2%
Nelson	1,086	18.2%
Marlborough	858	17.9%
Taranaki	2,517	17.3%
Canterbury	8,820	12.4%
Wellington	7,932	12.3%
Tasman	642	11.9%
Auckland	22,998	11.5%
(- South Auckland)	10,017	15.4%
Otago	2,940	10.7%
NEW ZEALAND	87,250	15.0%

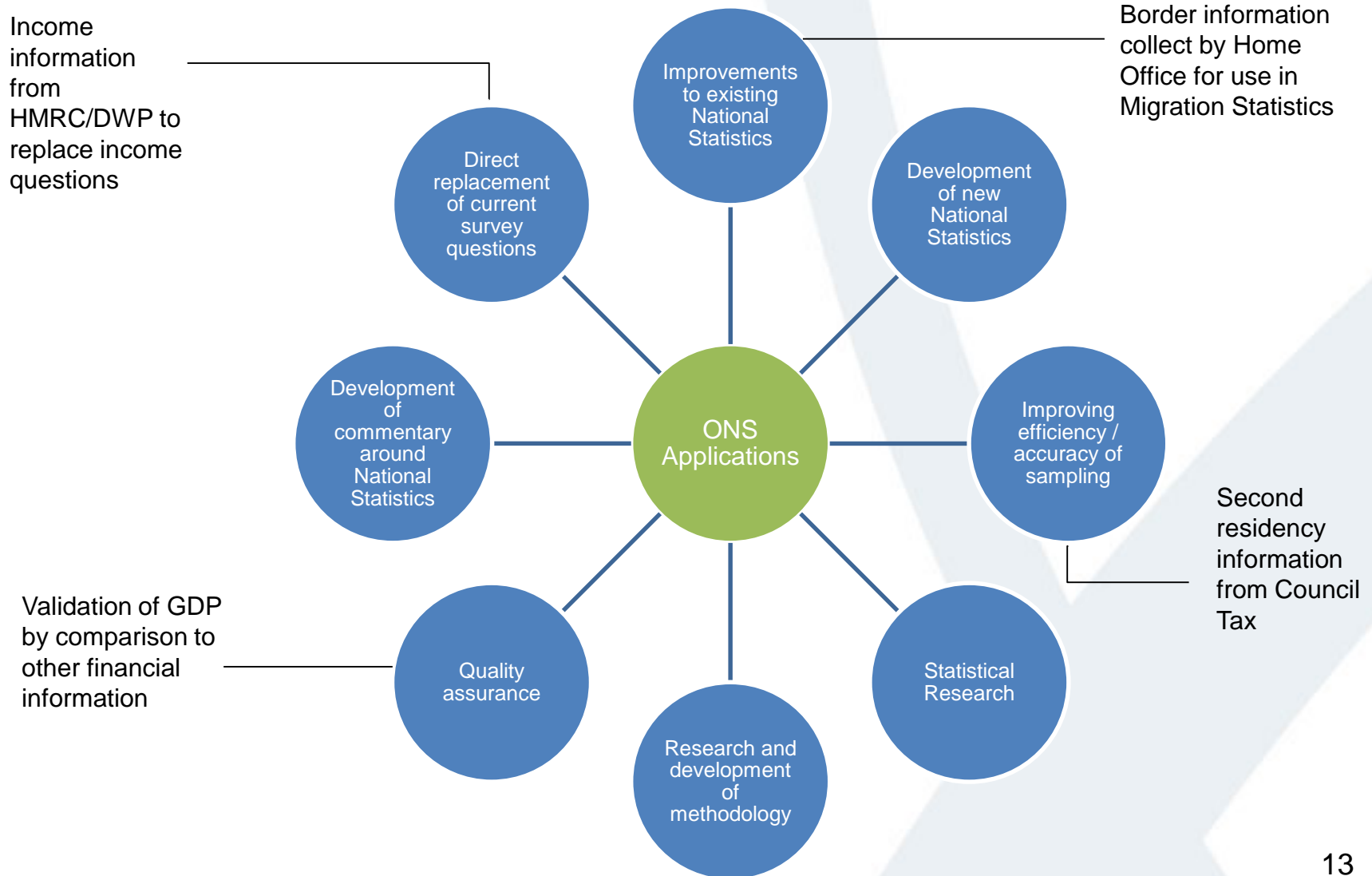


MINISTRY OF BUSINESS, INNOVATION & EMPLOYMENT

Temporary Migrants as Vulnerable Workers: A literature review

March 2016

Integration to benefit - ONS Applications



How does IDEAS fit with the GSS Strategy?

